



QUALITY & INNOVATION IN EVERY LOCK.

Qi-400F

Suitable for metal, wooden or laminate doors

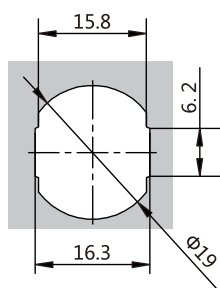
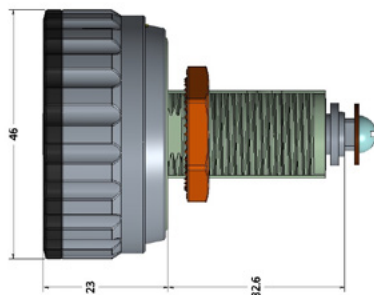
Material: Zinc Alloy, ABS

Finish: Matt Chrome Plating

Suitable door thickness: 0.6 - 25 mm

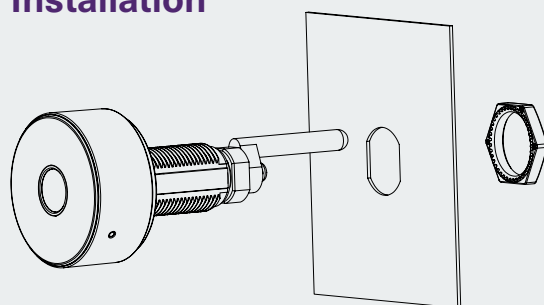


- A robust, heavy duty Biometric (fingerprint) lock
- Management fingerprint can be saved for override. Emergency power slot
- Tough zinc alloy body for maximum strength and durability
- Fitted with an alarm to warn of tampering or wrong user input
- Long battery life with low power alerts
- Can be set to private or public mode with occupancy indicator
- Available with a threaded barrel with a cam or a slam shut box (specify at point of order)
- Versatile mounting options and accessories to suit any application with various cams available
- Easily retrofitted to existing lockers
- Available in both black and white

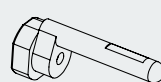


Fixing Hole Size

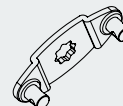
Installation



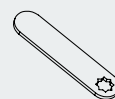
Optional accessories



Locking pin



Connector



Cam