



# ECOLOCKERS



## ECOLOCKERS

---

**Add: ROOM 301-2, HANG SENG WANCHAI BUILDING,  
3RD FLOOR, NO.200 HENNESSY ROAD, WANCHAI, HK  
T. 00-852 3979 7371  
Email: [info@ecolockers.com](mailto:info@ecolockers.com)  
Web: [www.ecolockers.com](http://www.ecolockers.com)  
Contact name: Lauria Yan  
Skype : lauria.yan**

# CATALOG

## 目录

### 01 Steel Office Cabinet Series 办公储物柜系列

2/3/4 抽折叠卡箱	P7
2/3/4 Drawers Black/White Folding Type Filing Cabinet	
2/3/4 抽常规宽卡	P7
2/3/4 Drawers Standard Lateral Filing Cabinet	
2/3 抽弧边宽卡	P7
2/3 Drawers Standard Lateral Filing Cabinet with Round Corners	
2/3 抽弧边活动柜	P8
2/3 Drawers Mobile Cabinet with Round Corners	
2/3 抽鹅颈活动柜	P8
2/3 Drawers Mobile Filing Cabinet with Integrated Handles	
2/3/4 抽鹅颈窄卡	P9-10
2/3/4 Drawers Vertical Filing Cabinet	
手柄 / 内扣半高储物柜	P11
Semi-Tall Cabinet with Lever Handle/ Recessed Handle	
手柄 / 内扣文件更衣柜	P12
Large Storage Cabinet with Lever Handle/ Recessed Handle	

### 03 Steel Locker Series 更衣柜系列

单 1-6 门更衣柜	P25
Single 1-6 Tiers Metal Locker	
带站脚单 1-6 门更衣柜	P25
Single 1-6 Tiers Metal Locker with Feet	
大更衣柜	P28
Spacious Large Steel Locker	
顺联更衣柜	P30
Steel Locker Combinations	

### 02 Garage Tool Cabinet Series 1 车库系列 1

A-1 款鹅颈对开门工具柜	P17
Double-Colored Semi-Tall Tool Cabinet with 2 Doors	
A-1 款鹅颈一抽 & 对开门工具柜	P17
Double-Colored Semi-Tall Tool Cabinet with 1 Drawer and 2 Doors	
A-1 款鹅颈三抽工具柜	P17
Double-Colored Semi-Tall Tool Cabinet with 3 Drawers	
A-2 款鹅颈带轮文件柜	P17
Double-Colored Mobile Large Regular Large Cabinet	
A-2 款鹅颈带轮工具柜	P17
Double-Colored Mobile Large Garage Tool Storage Cabinet	
A-2 款鹅颈带轮清洁柜	P17
Double-Colored Mobile Large Cabinet with Wardrobe Style	
护栏式对开门吊柜	P19
Guard Bar Style 2-Door Wall Cabinet	
对开门吊柜	P19
Wall Cabinet with 2 Door	
带护角上翻门吊柜	P19
Wall Cabinet with Flap-Up Door and Corner Protections	
上翻门吊柜	P19
Wall Cabinet with Flap-Up Door	

### 04 Garden Shed Series 花园棚系列

割草机储存棚	P33
Field Mower Storage Shed	
单坡对开门储物棚	P33
Single-Slope Garden Storage Shed (Swing Doors)	
双坡对开门储物棚	P34
Double-Slope Garden Storage Shed (Swing Doors)	

### Garage Tool Cabinet Series 2 车库系列 2

B-1 款对开门工具柜	P18
Semi-Tall Tool Cabinet with 2 Doors (Recessed Handle Type)	
B-1 款一抽 & 对开门工具柜	P18
Semi-Tall Tool Cabinet with 1 Drawer and 2 Doors (Recessed Handle Type)	
B-1 款三抽工具柜	P18
Semi-Tall Tool Cabinet with 3 Drawers (Recessed Handle Type)	
B-2 款带轮文件柜	P18
Mobile Regular Large Cabinet with Recessed Handle	
B-2 款带轮工具柜	P18
Mobile Large Tool Cabinet with Recessed Handle	
B-2 款带轮清洁柜	P18
Mobile Large Cabinet with Recessed Handle (Wardrobe Style)	
工具车	P20
Tool Cart	
悬挂工具板	P20
Hanging Tool Board	
2 抽对开工具车	P20
Tool Cart with 2 Drawers and Tool Board	

单坡花园储物棚	P34
Single Slope Garden Shed	
小双坡花园储物棚	P35
Small Double-Slope Garden Shed	
大双坡花园储物棚	P35
Large Double-Slope Garden Shed	

## 05 Safe/Gun Safe Series 保险柜枪柜系列

3/5/8 钥匙枪柜	P39
3/5/8 Gun Cabinet with Cam Lock	
3/5/8 密码枪柜	P39
3/5/8 Gun Cabinet with Combination Lock	
3/5/8 指纹枪柜	P39
3/5/8 Gun Cabinet with Fingerprint Lock	
60 指纹 / 密码保险柜	P40
60 Fingerprint-Lock / Electrical-Lock Safe	
60/70 防火保险柜	P40
60/70 Fireproof Safe	
25/35/45 密码保险柜	P41
25/35/45 Safe with Combination Lock	
25/35/45 指纹保险柜	P41
25/35/45 Safe with Fingerprint Lock	

## 06 Metal Bed Series 铁床系列

直线型双层床	P46
Regular Bunk Bed	
直角流线型双层床	P46
Streamlined Bunk Bed	
圆角型双层床	P46
Bunk Bed with Round Corners	
圆角流线型双层床	P46
Streamlined Bunk Bed with Round Corners	
现代金属单层床	P46
Modern Style Metal Bed	

## 07 School Furniture Series 课桌椅系列

课桌椅	P49-50
School Furniture	

## 08 Home & Office Series 家用办公系列

三抽网门柜	P51
Steel Cabinet with 3 Wire Mesh Style Drawers	
四层上翻门柜	P51
4-Tier Cabinet with Flap-up Door	
五层沥水篮	P51
5-Tier Steel Storage Shelving with Push-Pull Style Baskets	
单 / 双 / 三层橱窗式置物架	P52
1/2/3 Tiers Display Shelving	
收纳储物柜	P52
Storage Cabinet	

# Steel Office Filing Cabinet 钢制办公文件柜

○ 颜色 Colour ● ○  
○ 全钢材质 Made of Steel

## ● 2/3/4 Folding Type Filing Cabinet 2/3/4 抽折叠卡箱



型号 Model **SA-FC-F2D**  
名称 Name 2 抽折叠卡箱 - 黑色  
2 Drawers Black Folding Type  
Filing Cabinet - Black  
规格 Dimension W28.25" × D17.7" × H28.34"  
或 W717.6 × D450 × H720mm



型号 Model **SA-FC-F3D**  
名称 Name 3 抽折叠卡箱 - 黑色  
3 Drawers Black Folding Type  
Filing Cabinet - Black  
规格 Dimension W28.25" × D17.7" × H40"  
或 W717.6 × D450 × H1016mm



型号 Model **SA-FC-F4D**  
名称 Name 4 抽折叠卡箱 - 黑色  
4 Drawers Black Folding Type  
Filing Cabinet - Black  
规格 Dimension W28.25" × D17.7" × H52"  
或 W717.6 × D450 × H1320mm

## ● 2/3/4 Conventional wide card 2/3/4 常规宽卡



型号 Model **SA-FC-S2D**  
名称 Name 2 抽常规宽卡 - 白色  
2 Drawers Standard Lateral  
Filing Cabinet - White  
规格 Dimension W35.43" × D18.11" × H28.34"  
或 W900 × D460 × H720mm



型号 Model **SA-FC-S3D**  
名称 Name 3 抽常规宽卡 - 白色  
3 Drawers Standard Lateral  
Filing Cabinet - White  
规格 Dimension W35.43" × D18.11" × H40"  
或 W900 × D460 × H1016mm



型号 Model **SA-FC-S4D**  
名称 Name 4 抽常规宽卡 - 白色  
4 Drawers Standard Lateral  
Filing Cabinet - White  
规格 Dimension W35.43" × D18.11" × H52"  
或 W900 × D460 × H1320mm

## ● 2/3/4 Drawers Standard Lateral Filing Cabinet with Round Corners 2/3/4 弧边宽卡



型号 Model **SA-FC-H2D**  
名称 Name 2 抽弧边宽卡 - 黑色  
2 Drawers Standard Lateral Filing  
Cabinet with Round Corners  
规格 Dimension W35.43" × D18.11" × H28.34"  
或 W900 × D460 × H720mm



型号 Model **SA-FC-H3D**  
名称 Name 3 抽弧边宽卡 - 黑色  
3 Drawers Standard Lateral Filing  
Cabinet with Round Corners  
规格 Dimension W35.43" × D18.11" × H40"  
或 W900 × D460 × H1016mm



型号 Model **SA-FC-H4D**  
名称 Name 4 抽弧边宽卡 - 黑色  
4 Drawers Standard Lateral Filing  
Cabinet with Round Corners  
规格 Dimension W35.43" × D18.11" × H52"  
或 W900 × D460 × H1320mm



● 2/3 Drawers Mobile Filing Cabinet with Integrated Handle 2/3 抽鹅颈活动柜



型号 Model **SA-MC-T01**  
 名称 Name 2 抽鹅颈活动柜 - 黑色  
 2 Drawers Mobile Filing Cabinet  
 with Integrated Handle  
 规格 Dimension W14.57" × D17.32" × H23.62"  
 或 W370 × D440 × H600mm  
 颜色 Colour ● ○  
 全钢材质 Made of Steel



型号 Model **SA-MC-M01**  
 名称 Name 3 抽鹅颈活动柜 - 黑色  
 3 Drawers Mobile Filing Cabinet  
 with Integrated Handle  
 规格 Dimension W14.57" × D17.32" × H23.62"  
 或 W370 × D440 × H600mm  
 颜色 Colour ● ○  
 全钢材质 Made of Steel

● 2/3 Drawers Mobile Cabinet with Round Corners 2/3 抽弧边活动柜



型号 Model **SA-MC-T02**  
 名称 Name 2 抽弧边活动柜 - 白色  
 2 Drawers Mobile Cabinet  
 with Round Corners  
 规格 Dimension W15.75" × D19.68" × H23.62"  
 或 W400 × D500 × H600mm  
 颜色 Colour ● ○  
 全钢材质 Made of Steel



型号 Model **SA-MC-M02**  
 名称 Name 3 抽弧边活动柜 - 白色  
 3 Drawers Mobile Cabinet  
 with Round Corners  
 规格 Dimension W15.75" × D19.68" × H23.62"  
 或 W400 × D500 × H600mm  
 颜色 Colour ● ○  
 全钢材质 Made of Steel

# 2/3/4 Black/ White Vertical Filing Cabinet

● 2/3/4 抽黑 / 白窄卡柜





型号 Model **SA-FC-NW2D**  
名称 Name 二抽  
2 Drawers Vertical Filing Cabinet – White  
规格 Dimension W14.96" × D19.68" × H28.7"  
或 W380 × D500 × H729mm  
○ 全钢材质 Made of Steel



型号 Model **SA-FC-NB2D**  
名称 Name 二抽  
2 Drawers Vertical Filing Cabinet – Black  
规格 Dimension W14.96" × D19.68" × H28.7"  
或 W380 × D500 × H729mm  
○ 全钢材质 Made of Steel



型号 Model **SA-FC-NW3D**  
名称 Name 三抽  
3 Drawers Vertical Filing Cabinet – White  
规格 Dimension W14.96" × D19.68" × H40.55"  
或 W380 × D500 × H1030mm  
○ 全钢材质 Made of Steel



型号 Model **SA-FC-NB3D**  
名称 Name 三抽  
3 Drawers Vertical Filing Cabinet – Black  
规格 Dimension W14.96" × D19.68" × H40.55"  
或 W380 × D500 × H1030mm  
○ 全钢材质 Made of Steel



型号 Model **SA-FC-NW4D**  
名称 Name 四抽  
4 Drawers Vertical Filing Cabinet – White  
规格 Dimension W14.96" × D19.68" × H52.36"  
或 W380 × D500 × H1330mm  
○ 全钢材质 Made of Steel



型号 Model **SA-FC-NB4D**  
名称 Name 四抽  
4 Drawers Vertical Filing Cabinet – Black  
规格 Dimension W14.96" × D19.68" × H52.36"  
或 W380 × D500 × H1330mm



● Semi-Tall Cabinet with Lever Handle 手柄款半高储物柜



型号 Model **SA-HT-H01**  
 名称 Name 手柄款半高储物柜 - 黑色  
 Semi-Tall Cabinet with Lever Handle - Black  
 规格 Dimension W36" × D18" × H41.6"  
 或 W915 × D457 × H1057mm  
 颜色 Colour ●   
 全钢材质 Made of Steel



型号 Model **SA-HT-H02**  
 名称 Name 手柄款半高储物柜 - 白色  
 Semi-Tall Cabinet with Lever Handle - White  
 规格 Dimension W36" × D18" × H41.6"  
 或 W915 × D457 × H1057mm  
 颜色 Colour ●   
 全钢材质 Made of Steel

● Semi-Tall Cabinet with Recessed Handle 内扣半高储物柜



型号 Model **SA-HT-F01**  
 名称 Name 内扣半高储物柜 - 黑色  
 Semi-Tall Cabinet with Recessed Handle - Black  
 规格 Dimension W36" × D18" × H41.6"  
 或 W915 × D457 × H1057mm  
 颜色 Colour ●   
 全钢材质 Made of Steel



型号 Model **SA-HT-F02**  
 名称 Name 内扣半高储物柜 - 白色  
 Semi-Tall Cabinet with Recessed Handle - White  
 规格 Dimension W36" × D18" × H41.6"  
 或 W915 × D457 × H1057mm  
 颜色 Colour ●   
 全钢材质 Made of Steel

● Large Wardrobe Cabinet with Lever Handle  
手柄文件更衣柜



型号 Model **SA-SC-MB02**  
名称 Name 手柄文件更衣柜 - 黑色  
Large Wardrobe Cabinet with Lever Handle - Black  
规格 Dimension W36" × D18" × H72"  
或 W915 × D457 × H1830mm  
○ 颜色 Colour ● ○  
○ 全钢材质 Made of Steel

● Large Storage Cabinet with Lever Handle  
手柄文件柜



型号 Model **SA-SC-MW02**  
名称 Name 手柄文件柜 - 白色  
Large Storage Cabinet with Lever Handle - White  
规格 Dimension W36" × D18" × H72"  
或 W915 × D457 × H1830mm  
W31.5" × D15.7" × H70.9"  
或 W800 × D400 × H1800mm  
○ 颜色 Colour ● ○  
○ 全钢材质 Made of Steel

● Large Wardrobe Cabinet with Recessed Handle  
内扣文件更衣柜



型号 Model **SA-SC-MB01**  
名称 Name 内扣文件更衣柜 - 黑色  
Large Wardrobe Cabinet with Recessed Handle - Black  
规格 Dimension W36" × D18" × H72"  
或 W915 × D457 × H1830mm  
○ 颜色 Colour ● ○  
○ 全钢材质 Made of Steel

● Large Storage Cabinet with Recessed Handle  
内扣文件柜



型号 Model **SA-SC-MW01**  
名称 Name 内扣文件柜 - 白色  
Large Storage Cabinet with Recessed Handle - White  
规格 Dimension W36" × D18" × H72"  
或 W915 × D457 × H1830mm  
W31.5" × D15.7" × H70.9"  
或 W800 × D400 × H1800mm  
○ 颜色 Colour ● ○  
○ 全钢材质 Made of Steel

每款车库储物柜都具有高度稳定、大容量的性能。它时尚低调的设计适用于不同的场地场景。我们的车库储物柜有四个脚轮，方便您移动它到任何您需要的地方，并且产品内部拥有不同数量的可调节货架，满足您不同的储存需求，对您来说是一个完美的储物选择！



Each cabinet is high stable with large capacity. Its sleek and understated design means you can effortlessly add this cabinet to your current arrangement. It's a perfect choice to contain your clutter and chaos with this storage cabinet with several adjustable shelves which allow for various customizable options.





# Garage Tool Cabinet 工具柜

## ● Double-Colored Semi-Tall Tool Cabinet 半高鹅颈工具柜



型号 SA-GC-M01

Model

名称 对开

Name Double-Colored Semi-Tall Tool Cabinet with 2 Doors



型号 SA-GC-M02

Model

名称 一抽加对开

Name Double-Colored Semi-Tall Tool Cabinet with 1 Drawer and 2 Doors



型号 SA-GC-M03

Model

名称 三抽

Name Double-Colored Semi-Tall Tool Cabinet with 3 Drawers

半高鹅颈储物柜规格 Double-Colored Semi-Tall Tool Cabinet Dimension W30.31" × D18.11" × H35.43" 或 W770 × D460 × H900mm

○ 全钢材质 Made of Steel ○ 颜色 Colour ●/●

## ● Double-Colored Mobile Large Cabinet 全高鹅颈工具柜



型号 SA-TC-M03

Model

名称 文件柜

Name Double-Colored Mobile Regular Large Cabinet



型号 SA-TC-M04

Model

名称 工具柜

Name Double-Colored Mobile Large Tool Cabinet



型号 SA-CC-M01

Model

名称 清洁柜

Name Double-Colored Mobile Large Cabinet with Wardrobe Style

全高鹅颈储物柜规格 Double-Colored Mobile Large Cabinet Dimension W31.5" × D16" × H71" 或 W800 × D406 × H1800mm

○ 全钢材质 Made of Steel ○ 颜色 Colour ●/●



# ZF Garage Tool Cabinet 卓凡新款储存柜

## ● Double-Colored Semi-Tall Tool Cabinet 半高鹅颈工具柜



型号 **SA-GC-S01**  
Model  
名称 对开  
Name Semi-Tall Tool Cabinet with 2 Doors (Recessed Handle Type)



型号 **SA-GC-S02**  
Model  
名称 一抽加对开  
Name Semi-Tall Tool Cabinet with 1 Drawer and 2 Doors (Recessed Handle Type)



型号 **SA-GC-S03**  
Model  
名称 三抽  
Name Semi-Tall Tool Cabinet with 3 Drawers (Recessed Handle Type)

半高鹅颈储物柜规格 Half-height gooseneck locker Dimension W31.50" × D16.54" × H35.43" 或 W800 × D420 × H900mm

○ 全钢材质 Made of Steel    ○ 颜色 Colour ● ○

## ● Mobile Large Cabinet with Recessed Handle 全高内扣手工具柜



型号 **SA-TC-S03**  
Model  
名称 文件柜  
Name Mobile Regular Large Cabinet with Recessed Handle



型号 **SA-TC-S04**  
Model  
名称 工具柜  
Name Mobile Large Tool Cabinet with Recessed Handle



型号 **SA-CC-S01**  
Model  
名称 清洁柜  
Name Mobile Large Cabinet with Recessed Handle (Wardrobe Style)

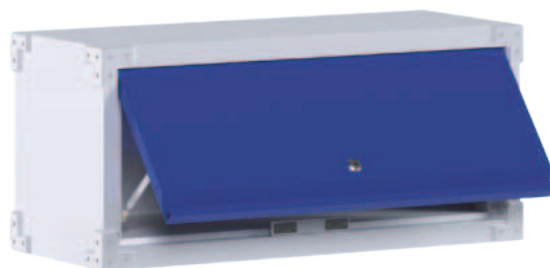
全高鹅颈储物柜规格 Mobile Large Cabinet with Recessed Handle Dimension W31.5" × D16" × H71" 或 W800 × D406 × H1800mm

○ 全钢材质 Made of Steel    ○ 颜色 Colour ● ○

● Wall Cabinet 吊柜



型号 Model **SA-GC-H03**  
 名称 Name 护栏式对开门吊柜  
 Guard Bar Style 2-Door Wall Cabinet  
 规格 Dimension W31.50" × D11.81" × H30.31"  
 或 W800 × D300 × H770mm  
 ○ 颜色 Colour    
 ○ 全钢材质 Made of Steel



型号 Model **SA-GC-H04**  
 名称 Name 带护角上翻门吊柜  
 Wall Cabinet with Flap-Up Door and Corner Protections  
 规格 Dimension W30.31" × D11.81" × H13.78"  
 或 W770 × D300 × H350mm  
 ○ 颜色 Colour    
 ○ 全钢材质 Made of Steel



型号 Model **SA-GC-H01**  
 名称 Name 对开门吊柜  
 Wall Cabinet with 2 Doors  
 规格 Dimension W30.31" × D11.81" × H30.31"  
 或 W770 × D300 × H770mm  
 颜色 Colour    
 ○ 全钢材质  
 ○ Made of Steel



型号 Model **SA-GC-H02**  
 名称 Name 上翻门吊柜  
 Wall Cabinet with Flap-Up Door  
 规格 Dimension W30.31" × D11.81" × H13.58"  
 或 W770 × D300 × H345mm  
 颜色 Colour    
 ○ 全钢材质  
 ○ Made of Steel

● Tool Cart 工具车

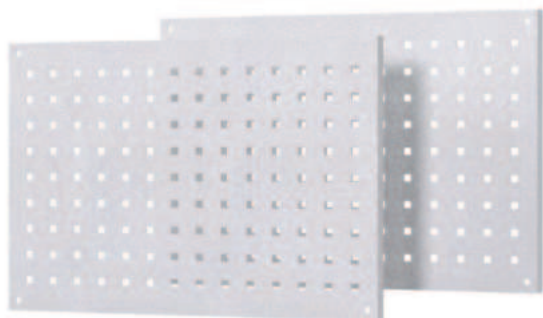


型号 Model **SA-TC-M01**  
 名称 Name 2 抽对开工具车  
 Tool Cart with 2 Drawers and Tool Board  
 规格 Dimension W31.50 × D16.54" × H35.43"  
 或 W800 × D420 × H900mm  
 ○ 颜色 Colour    
 ○ 全钢材质 Made of Steel

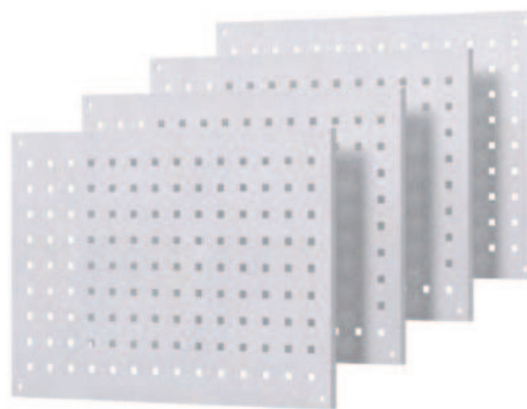


型号 Model **SA-TC-M02**  
 名称 Name 工具车  
 Tool Cart  
 规格 Dimension W27.56 × D13.78" × H30.71"  
 或 W700 × D350 × H780mm  
 ○ 颜色 Colour    
 ○ 全钢材质 Made of Steel

● Hanging Tool Board 悬挂工具板



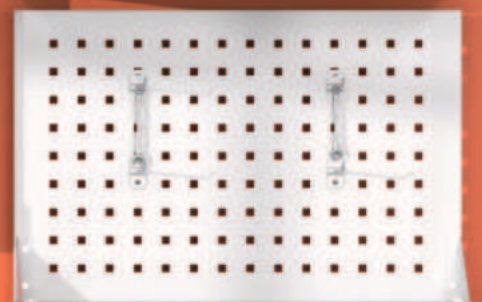
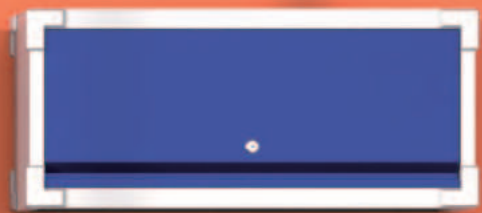
型号 Model **SA-A-W01**  
 名称 Name 洞洞板 \*2  
 Hanging Tool Board\*2  
 规格 Dimension W21.45" × D0.59" × H15.16"  
 或 W545 × D15 × H385mm  
 ○ 颜色 Colour    
 ○ 全钢材质 Made of Steel



型号 Model **SA-A-W02**  
 名称 Name 洞洞板 \*4  
 Hanging Tool Board\*4  
 规格 Dimension W21.45" × D0.59" × H15.16"  
 或 W545 × D15 × H385mm  
 ○ 颜色 Colour    
 ○ 全钢材质 Made of Steel









我们的金属更衣柜是由优质的冷轧钢制成的，确保更衣柜的坚固耐用。并且采用了高温固化硬化层和环保粉末静电喷涂工艺，每扇门都有通风口设计，确保良好的通风以减少更衣柜内湿气和异味的积聚。更衣柜拥有充足的存储空间，可以将您的各种物品或衣物存放至内，为您打造完美的储物空间。

Our metal locker is made of cold-rolled steel. The locker is robust and durable. Each door has vents, ensuring excellent ventilation and reducing the accumulation of moisture and odor in the locker. Ample storage space locker provides valuable storage space to store your various items or clothes inside, and perfectly fits your needs.



# Steel Locker Series 更衣柜系列

## ● Single 1-6 Tiers Steel Locker 单 1-6 门更衣柜



型号 SA-SL-1 Model	型号 SA-SL-2 Model	型号 SA-SL-3 Model	型号 SA-SL-4 Model	型号 SA-SL-5 Model	型号 SA-SL-6 Model
名称 单 1 门更衣柜 Name Single 1 Tier Steel Locker	名称 单 2 门更衣柜 Name Single 2 Tiers Steel Locker	名称 单 3 门更衣柜 Name Single 3 Tiers Steel Locker	名称 单 4 门更衣柜 Name Single 4 Tiers Steel Locker	名称 单 5 门更衣柜 Name Single 5 Tiers Steel Locker	名称 单 6 门更衣柜 Name Single 6 Tiers Steel Locker

单 1-6 门更衣柜规格 Single 1-6 Tiers Steel Lockers Dimension W12"×D18"×H72" 或 W305×D458×H1830mm ○全钢材质 Made of Steel

○颜色 Colour ● 灰门黑柜体 Grey Door & Black Body 黑门灰柜体 Black Door & Grey Body

## ● Single 1-6 Tiers Steel Locker with Feet 单 1-6 门更衣柜 (带站脚)



型号 SA-SL-L1 Model	型号 SA-SL-L2 Model	型号 SA-SL-L3 Model	型号 SA-SL-L4 Model	型号 SA-SL-L5 Model	型号 SA-SL-L6 Model
名称 1 门更衣柜 Name Single 1 Tier Steel Locker with feet	名称 2 门更衣柜 Name Single 2 Tiers Steel Locker with feet	名称 3 门更衣柜 Name Single 3 Tiers Steel Locker with feet	名称 4 门更衣柜 Name Single 4 Tiers Steel Locker with feet	名称 5 门更衣柜 Name Single 5 Tiers Steel Locker with feet	名称 6 门更衣柜 Name Single 6 Tiers Steel Locker with feet

单 1-6 门更衣柜规格 Single 1-6 Tiers Steel Lockers Dimension W12"×D15"×H71.6" 或 W305×D380×H1820mm ○全钢材质 Made of Steel

○颜色 Colour ● 灰门黑柜体 Grey Door & Black Body 黑门灰柜体 Black Door & Grey Body





[info@ecolockers.com](mailto:info@ecolockers.com)

Skype: lauria.yan



# Spacious Large Storage Locker

- Available in three colors 三色可选





型号 Model **SA-SL-.1-3**  
名称 Name 三门大更衣柜 3-Door Storage Locker Combination



型号 Model **SA-SL-.2-3**  
名称 Name 六门大更衣柜 6-Door Storage Locker Combination



型号 Model **SA-SL-.3-3**  
名称 Name 九门大更衣柜 9-Door Storage Locker Combination

统一规格 Uniform Dimension  
W35.43" × D15.7" × H72"  
或 W900 × D400 × H1828mm

三色可选 Three Colors Available



- 全钢材质
- Made of Steel

# Spacious Large Storage Locker 大更衣柜

- Available in Three Colors 三色可选







型号 Model **SA-L-.2-4**  
 名称 四排 8 门更衣柜  
 Name 8-Door Storage Locker Combination



型号 Model **SA-L-.3-4**  
 名称 四排 12 门更衣柜  
 Name 12-Door Storage Locker Combination

四排更衣柜 4-Column Locker Combination 规格 Dimension W47.24"×D17.8"×H70.9" 或 W1200\*D450\*H1800mm ○全钢材质 Made of Steel

五排更衣柜 5-Column Locker Combination 规格 Dimension W60"×D17.7"×H70.9" 或 W1524\*D450mm\*H1800 ○全钢材质 Made of Steel



型号 Model **SA-L-.1-5**  
 名称 五排 5 门更衣柜  
 Name 5-Door Storage Locker Combination



型号 Model **SA-L-.2-5**  
 名称 五排 10 门更衣柜  
 Name 10-Door Storage Locker Combination





我们的工具房系列是由镀锌钢制成的，较厚的金属易组装结构使其稳定和耐用，适用于所有季节和气候。可以防潮防腐蚀，并抵御恶劣天气长期使用。环保粉末静电喷涂层工艺不仅具有防潮性，同时它还具有抗紫外线功能，有效地为您放置于内部的物件保持良好状态。厚实的墙壁可以更好地防止雨水的渗透。我们花园工具房的设计给人一种现代简洁的外观，能够为您装饰后花园增添一道亮丽的风景线。

Our garden shed is made of galvanized steel to prevent moisture and resist bad weather for long-lasting use. Painted surface that is rust and weather-resistant, and also it has UV-resistant function which effectively helps to keep your property in good condition. The superimposed wall will prevent the penetration of rainwater better. The contemporary design of our garden shed gives a modern clean appearance. It will be a eye-catching accent decor in your beautiful garden or backyard.



# Tool room series 工具房系列

## ● Field Mower Storage Shed 割草机储存棚

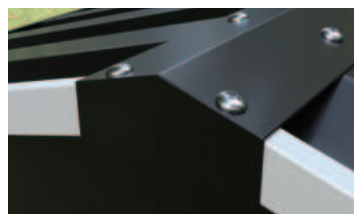


型号 Model No. **SA-SS-4/6-1**  
规格 Dimension W34.64" × D33" × H24.4"  
或 W880 × D840 × H620mm

- 全钢材质
- Made of Steel

这款割草机储存棚不仅可用作户外工具的收纳小屋，还可以作为小狗窝，为您的宠物带来一个温暖安全的房间。或者您可以把它作为一个小型收纳棚，以保持您的后院整洁和干净，所有部件都很容易组装。

This field mower storage shed can be used not only as an outdoor tool shed but also as a pet house to give your pets a warm and safe room. Or use it can be used as a small collection room to keep your backyard neat and clean with good looking. All parts are easy to assemble.



## ● Single-Slope Garden Storage Shed (Swing Doors) 单坡对开门储物棚



型号 Model No. **SA-SS-03 / SA-SS-04**  
规格 Dimension W48.43" × D35.63" × H72.83" 或 W1230 × D905 × H1850mm  
W48.43" × D49.22" × H72.83" 或 W1230 × D1250 × H1850mm

- 全钢材质
- Made of Steel

这款储物棚采用高质量的镀锌钢和耐用的结构建造，以确保其长期可靠性。它们可以抵抗恶劣的天气条件，并为您提供多年的服务。这款单坡储物棚采用的是对开门设计，锁定装置可以防止未经授权的进入。同时根据您的要求，您可以选择不同大小和配置的储物棚，以满足您的具体要求。

This single slope garden shed is constructed with high-quality galvanized steel and sturdy structures, it is built to last. The garden shed can withstand harsh weather conditions and serve you reliably for years. And it features a double swing doors design, locking mechanisms prevent unauthorized access. Depending on your requirements, you can choose tool sheds in different sizes and configurations to meet your specific needs.



## ● Double-Slope Garden Storage Shed ( Swing Doors) 双坡对开门储物棚

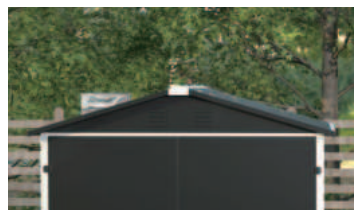


型号 Model No. **SA-DS-01**  
规格 Dimension W49.41" × D34.84" × H72.84" 或 W1255 × D885 × H1850mm

- 全钢材质
- Made of Steel

这款双坡储物棚采用对开门设计，由于门可以完全打开，它们提供了更大的通风和视野机会。这对于连接室内和室外空间的场合非常有用。并且我们的双坡储物棚，提供了充足存储空间，保持其整洁有序。安全、耐用，而且外观时尚大方，这个储物棚满足了您对功能性和美观性的所有要求。

This garden shed has a double swing doors design, since the doors can fully open, they offer enhanced ventilation and panoramic views, making them ideal for spaces connecting indoor and outdoor areas. Our double-slope storage shed offers ample storage space while keeping things tidy and organized. Safe, durable, and stylish in appearance, this storage shed meets all your requirements for functionality and aesthetics.



## ● Single Slope Garden Storage Shed 单坡花园储物棚



型号 Model No. **SA-SS-01 / SA-SS-02**  
规格 Dimension W75.6" × D35.63" × H72.84" 或 W1920 × D905 × H1850mm  
W76.6" × D49.21" × H72.84" 或 W1920 × D1250 × H1850mm

- 全钢材质
- Made of Steel

这款工具房采用的单坡设计，增加了额外的存储空间，能够有效地防止雨水聚集，使内部保持良好干燥的状态，而单坡的设计也比较吸睛。

This small storage shed with an inclined slope roof, adds extra storage, prevents rainwater from gathering and rusting, and prevents the shed from becoming musty during hot and humid weather. The galvanized with powder coating textured finish is not only appealing, but offers increased resistance against harmful weather and corrosion.



● Double-Slope Garden Storage Shed 双坡花园储物棚



型号 Model No. **SA-DS-02 / SA-DS-03**  
 规格 Dimension W76.78\*\*D48.43\*\*H72.84" 或 W1950\*D1230\*H1850mm  
 W103.74\*\*D75.6\*\*H72.84" 或 W2635\*D1920\*H1850mm

- 全钢材质
- Made of Steel

这款双坡小尺寸储物棚由镀锌钢板制成，保护您的存储工具不受阳光和雨水的影响，防腐防锈，同时可以承受各种天气因素，可以长期放置在户外。

This double-slope small sized storage shed is made of galvanized steel panels, to protect your shed and tools from sunlight and rain, not easy to rust that can withstand various weather factors. Can be placed outdoors for a long time.



● Double-Slope Garden Storage Shed 双坡花园储物棚



型号 Model No. **SA-DS-04**  
 规格 Dimension W130.91\*\*D102.76\*\*H72.84" 或 W3325\*D2610\*H1850mm

- 全钢材质
- Made of Steel

这款大双坡储物棚不仅空间充足，确保您的多功能的储物空间整洁和干净，还可以选择定制区域的通风口，保证自然光和通风的空气流通，或根据您的需要关闭。集聚了良好的外观、坚固耐用，而且美观大方，引人注目。

This Ample storage space garden shed with double slopes provides valuable storage space for tools, garden equipment, and garden furniture, and also makes it possible to store accessories such as lawnmowers, bicycles, and trash cans can be placed in. It is equipped with vents, ensuring excellent ventilation and reducing the accumulation of moisture and odor in the house.









# Gun Cabinet 枪柜

## ● 3/5/8 Guns Cabinet with Single Cam Lock 3/5/8 枪钥匙枪柜



型号 Model **SA-GS-K01**  
 名称 Name 单锁 + 把手 3 枪枪柜  
 3 Guns Cabinet + 1 Lever Handle  
 规格 Dimension W9.85" × D9.85" × H57.1"  
 或 W250 × D250 × H1450mm

○ 全钢材质 Made of Steel



型号 Model **SA-GS-K02**  
 名称 Name 单锁 + 把手 5 枪枪柜  
 5 Guns Cabinet + 1 Lever Handle  
 规格 Dimension W11.03" × D11.03" × H57.1"  
 或 W280 × D280 × H1450mm

○ 全钢材质 Made of Steel



型号 Model **SA-GS-K03**  
 名称 Name 单锁 + 把手 8 枪枪柜  
 8 Guns Cabinet + 1 Lever Handle  
 规格 Dimension W15.74" × D11.81" × H57.1"  
 或 W400 × D300 × H1450mm

○ 全钢材质 Made of Steel

## ● 3/5/8 Guns Cabinet with Combination Lock 3/5/8 枪密码枪柜



型号 Model **SA-GS-P01**  
 名称 Name 密码锁 + 把手 3 枪枪柜  
 3 Guns Cabinet + 1 Lever Handle  
 规格 Dimension W9.85" × D9.85" × H57.1"  
 或 W250 × D250 × H1450mm

○ 全钢材质 Made of Steel



型号 Model **SA-GS-P02**  
 名称 Name 密码锁 + 把手 5 枪枪柜  
 5 Guns Cabinet + 1 Lever Handle  
 规格 Dimension W11.05" × D11.05" × H57.1"  
 或 W280 × D280 × H1450mm

○ 全钢材质 Made of Steel



型号 Model **SA-GS-P03**  
 名称 Name 密码锁 + 把手 8 枪枪柜  
 8 Guns Cabinet + 1 Lever Handle  
 规格 Dimension W15.75" × D11.82" × H57.1"  
 或 W400 × D300 × H1450mm

○ 全钢材质 Made of Steel

## ● 3/5/8 Guns Cabinet with Fingerprint Lock 3/5/8 指纹枪柜



型号 Model **SA-GS-F01**  
 名称 Name 指纹锁 +3 枪枪柜  
 3 Guns Cabinet + 1 Lever Handle  
 规格 Dimension W9.85" × D9.85" × H57.1"  
 或 W250 × D250 × H1450mm

○ 全钢材质 Made of Steel



型号 Model **SA-GS-F02**  
 名称 Name 指纹锁 +5 枪枪柜  
 5 Guns Cabinet + 1 Lever Handle  
 规格 Dimension W11.05" × D11.05" × H57.1"  
 或 W280 × D280 × H1450mm

○ 全钢材质 Made of Steel



型号 Model **SA-GS-F03**  
 名称 Name 指纹锁 +8 枪枪柜  
 8 3 Guns Cabinet + 1 Lever Handle  
 规格 Dimension W15.75" × D11.82" × H57.1"  
 或 W400 × D300 × H1450mm

○ 全钢材质 Made of Steel

# Safe Cabinet 保险柜

## ● H1/H6 系列 H1/H6 Series- 60/70/80 Fireproof Safe 防火保险柜



型号 Model **H1-620/720/820**  
名称 Name H1 防火保险柜 H1 Fireproof Safe  
规格 Dimension W16.54" × 13.39" × 24.41" 或 W420\*D340\*H620mm  
W17.72" × 16.54" × 28.35" 或 W450\*D420\*H720mm  
W18.51" × 17.72" × 32.29" 或 W470\*D450\*H820mm  
○ 全钢材质 Made of Steel



型号 Model **H6-680/780/880**  
名称 Name H6 防火保险柜 H6 Fireproof Safe  
规格 Dimension W18.9" × 18.9" × 26.78" 或 W480\*D480\*H680mm  
W20.48" × 20.48" × 30.71" 或 W520\*D520\*H780mm  
W20.48" × 20.48" × 34.65" 或 W520\*D520\*H880mm  
○ 全钢材质 Made of Steel

## ● 60 指纹 / 密码保险柜 60 Fingerprint-Lock / Electrical-Lock Safe



型号 Model **S60-FP-B**  
名称 Name H60 指纹锁保险柜 / H60 Fingerprint-Lock Safe  
规格 Dimension H23.63" × W14.97" × D13" 或 H600\*W380\*D330mm  
○ 全钢材质 Made of Steel



型号 Model **S60-EL-C**  
名称 Name H60 电子密码保险柜 / H60 Electrical-Lock Safe  
规格 Dimension H23.63" × W14.97" × D13" 或 H600\*W380\*D330mm  
○ 全钢材质 Made of Steel

# 25/35/45 Safe Cabinet 25/35/45 保险柜

## ● H25 Safe with Combination Lock 25 密码保险柜



型号 Model **SA-25SAF-P01**  
名称 Name 小型密码保险柜  
H25 Safe with Combination Lock  
规格 Dimension W13.78" × D9.85" × H9.85"  
或 W350 × D250 × H250mm  
○ 全钢材质 Made of Steel

## ● H25 Safe with Fingerprint Lock 25 指纹保险柜



型号 Model **SA-25SAF-P01**  
名称 Name 小型指纹保险柜  
H25 Safe with Fingerprint Lock  
规格 Dimension W13.78" × D9.85" × H9.85"  
或 W350 × D250 × H250mm  
○ 全钢材质 Made of Steel

## ● H35 Safe with Combination Lock 35 密码保险柜



型号 Model **SA-35SAF-P01**  
名称 Name 中型密码保险柜  
H35 Safe with Combination Lock  
规格 Dimension W15.75" × D11.82" × H14.18"  
W400 × D300 × H360  
○ 全钢材质 Made of Steel

## ● H35 Safe with Fingerprint Lock 35 指纹保险柜



型号 Model **SA-35SAF-P01**  
名称 Name 中型指纹保险柜  
H35 Safe with Fingerprint Lock  
规格 Dimension W15.75" × D11.82" × H14.18"  
W400 × D300 × H360  
○ 全钢材质 Made of Steel

## ● H45 Safe with Combination Lock 45 密码保险柜



型号 Model **SA-45SAF-P01**  
名称 Name 大型密码保险柜  
H45 Safe with Combination Lock  
规格 Dimension W14.97" × D12.6" × H17.72"  
或 W380 × D320 × H450  
○ 全钢材质 Made of Steel

## ● H45 Safe with Fingerprint Lock 45 指纹保险柜



型号 Model **SA-45SAF-P01**  
名称 Name 大型指纹保险柜  
H45 Safe with Fingerprint Lock  
规格 Dimension W14.97" × D12.6" × H17.72"  
或 W380 × D320 × H450  
○ 全钢材质 Made of Steel









● Regular Bunk Bed 直线型双层床



型号 Model **SA-MBGR-01**  
名称 Name 直线型双层床  
Regular Bunk Bed  
规格 Dimension L74.81" × W38.98" × H64.97"  
或 L1900 × W990 × H1650mm  
○ 全钢材质 Made of Steel

● Streamlined Bunk Bed 直角流线型双层床



型号 Model **SA-MBGR-02**  
名称 Name 直角流线型双层床  
Streamlined Bunk Bed  
规格 Dimension L74.81" × W38.98/53.94" × H63"  
或 L1900 × W990/1370 × H1600  
○ 全钢材质 Made of Steel

● Bunk Bed with Round Corners 圆角型双层床



型号 Model **SA-MBBL-01**  
名称 Name 圆角型双层床  
Bunk Bed with Round Corners  
规格 Dimension L77.96" × W41.97" × H59.06"  
或 L1980 × W1066 × H1500mm  
○ 全钢材质 Made of Steel

● Streamlined Bunk Bed with Round Corners 圆角流线型双层床



型号 Model **SA-MBBL-02**  
名称 Name 圆角流线型双层床  
Streamlined Bunk Bed with Round Corners  
规格 Dimension L77.96" × W41.97/56.89" × H59.06"  
或 L1980 × W1066/1445 × H1500  
○ 全钢材质 Made of Steel

● Modern Style Metal Bed 现代金属单层床



型号 Model **SA-MBMS-01**  
名称 Name 现代金属单层床  
Modern Style Metal Bed  
规格 Dimension L74.81" × W35.44" × H33.47"  
或 L1900 × W900 × H850  
○ 全钢材质 Made of Steel





如果您需要坚固的教室家具，我们为您提供最好的选择！我们的学校家具款式多样，经久耐用，价格合理。我们课桌椅的现代经典的设计将适应不同教室的要求，可调节的高度可以适应不同的年级。我们的学校家具具有卓越的耐用性，已得到了客户的良好反馈。

If you need sturdy school furniture sets in the classroom, we got the best choices for you! Our school furniture offers a large variety of styling with long-lasting constructions at affordable and reasonable price. Modern or classic designs will fit the requirements from different classrooms, and the adjustable types can fit different grades. Enduring value, our school furniture comes with exceptional durability that got pretty good feedback from our customers.





	Nursery	Reception & 1	Year 2 & 3	Year 4-6	Year 7-8	Year 9+
COLOUR CODE	ORANGE FEET	VIOLET FEET	YELLOW FEET	RED FEET	GREEN FEET	BLUE FEET
Size Mark	1	2	3	4	5	6
Age Range	3-4	4-6	6-8	8-14	11-14	14-Adult
Table Height	460mm	530mm	590mm	640mm	710mm	760mm
Chair Height	260mm	310mm	350mm	380mm	430mm	460mm



● Single PP Desk and Chair with Grey Color



型号 Model **AY-D 11B**  
 名称 Name 灰色单 PP 桌椅  
 Single PP Desk and Chair with Grey Color  
 规格 Dimension Desk: L650 × W450 × H700-760mm  
 或 25.6" × 17.72" × 27.56"/29.93"  
 Chair: D380 × W410 × H420-460mm  
 或 14.97" × 16.15" × 16.54"/18.12"

○ 全钢材质 Made of Steel

● Single Plywood Desk and Chair with Streamlined Design



型号 Model **AY-D 12**  
 名称 Name 流线型设计的单层胶合板桌椅  
 Single Plywood Desk and Chair with Streamlined Design  
 规格 Dimension Desk: L600 × W400 × H760mm  
 或 23.63" × 15.75" × 29.93"  
 Chair: L360 × W360 × H430mm  
 或 14.18" × 14.18" × 16.93"

○ 全钢材质 Made of Steel

● Single PP Adjustable Desk and Chair



型号 Model **AY-D 15**  
 名称 Name 单人课桌 (中密度纤维板台面) 与 PP 椅子  
 Single PP Adjustable Desk and Chair  
 规格 Dimension Desk: L600 × W400 × H670-760mm  
 或 23.63" × 15.75" × 26.38"-29.93"  
 Chair: L330 × W360 × H350-440mm  
 或 13" × 14.18" × 13.78"-17.33"

○ 全钢材质 Made of Steel

● MDF Double Desk and Chair with Streamlined Design



型号 Model **AY-D 43**  
 名称 Name 中密度纤维板双桌椅  
 MDF Double Desk and Chair with Streamlined Design  
 规格 Dimension Desk: L1100 × W400 × H770mm  
 或 43.31" × 15.75" × 30.32"  
 Chair: L1100 × W250 × H420mm  
 或 43.31" × 9.85" × 16.54"

○ 全钢材质 Made of Steel

# Home Office Series 家用办公系列

## ● Storage Cabinet / Shelving 收纳置物架



型号 Model **SA-HM-01**  
 名称 Name 三抽网门柜  
 Steel Cabinet with 3 Wire Mesh Style Drawers  
 规格 Dimension W31.5" × D15.75" × H41.33"  
 或 W800 × D400 × H1050mm  
 ○ 全钢材质  
 ○ Made of Steel



型号 Model **SA-HM-02**  
 名称 Name 四层上翻门柜  
 4-Tier Cabinet with Flap-Up Doors  
 规格 Dimension W22.44" × D12.4" × H58.15"  
 或 W570 × D315 × H1477mm  
 ○ 钢和玻璃材质  
 ○ Made of Steel and Glass



型号 Model **SA-HM-03**  
 名称 Name 五层沥水篮  
 5-Tier Shelving with Push-Pull Style Baskets  
 规格 Dimension W12" × D15.16" × H35.4"  
 或 W305 × D385 × H900mm  
 ○ 全钢材质  
 ○ Made of Steel

## ● 1/2/3 Tiers Display Shelving 单 / 双 / 三层橱窗式置物架



型号 Model **SA-HM-04**  
 名称 Name 单层橱窗式置物架  
 1 Tier Display Shelving  
 规格 Dimension W13.78" × D13.78" × H18.51"  
 或 W350 × D350 × H470mm  
 颜色 Colour 可定制 Customizable  
 ○ 全钢材质  
 ○ Made of Steel



型号 Model **SA-HM-05**  
 名称 Name 双层橱窗式置物架  
 2 Tiers Display Shelving  
 规格 Dimension W13.78" × D13.78" × H39.38"  
 或 W350 × D350 × H1000mm  
 颜色 Colour 可定制 Customizable  
 ○ 全钢材质  
 ○ Made of Steel



型号 Model **SA-HM-06**  
 名称 Name 三层橱窗式置物架  
 3 Tiers Display Shelving  
 规格 Dimension W13.78" × D13.78" × H55.12"  
 或 W350 × D350 × H1400mm  
 颜色 Colour 可定制 Customizable  
 ○ 全钢材质  
 ○ Made of Steel



● Storage Cabinet 收纳储物柜



型号 Model **SA-HM-07**  
 名称 Name 单开门双层玻璃储物柜  
 1Short Ark with 1 Glass Door  
 规格 Dimension W19.69" × D13.78" × H29.53"  
 或 W500 × D350 × H750mm  
 颜色 Colour 可定制 Customizable  
 ○ 钢和玻璃材质  
 ○ Made of Steel and Glass



型号 Model **SA-HM-09**  
 名称 Name 对开门双层玻璃储物柜  
 Double Glass Doors Cabinet  
 规格 Dimension W31.50" × D13.78" × H31.50"  
 或 W800 × D350 × H800mm  
 颜色 Colour 可定制 Customizable  
 ○ 钢和玻璃材质  
 ○ Made of Steel and Glass



型号 Model **SA-HM-08**  
 名称 Name 高站脚单开门玻璃储物柜  
 Tall Cabinet with 1 Glass Door  
 规格 Dimension W19.69" × D13.78" × H62.99"  
 或 W500 × D350 × H1600mm  
 颜色 Colour 可定制 Customizable  
 ○ 钢和玻璃材质  
 ○ Made of Steel and Glass



型号 Model **SA-HM-10**  
 名称 Name 对开储物吊柜  
 Double Doors Home Style Wall Cabinet  
 规格 Dimension W31.50" × D13.78" × H15.75"  
 或 W800 × D350 × H400mm  
 颜色 Colour 可定制 Customizable  
 ○ 钢和玻璃材质  
 ○ Made of Steel and Glass



型号 Model **SA-HT-L01**  
 名称 Name 收纳储物柜  
 Storage Cabinet with 2 Doors and 4 Feet  
 规格 Dimension W33.46" × D15.7" × H43.3"  
 或 W850 × D400 × H1100mm  
 颜色 Colour 可定制 Customizable  
 ○ 全钢材质  
 ○ Made of Steel



型号 Model **SA-HT-L02**  
 名称 Name 收纳置物柜  
 Storage Cabinet with 2 Doors, 3 Drawers and 4 Feet  
 规格 Dimension W47.25" × D13.8" × H44.9"  
 或 W1200 × D350 × H1140mm  
 颜色 Colour 可定制 Customizable  
 ○ 全钢材质  
 ○ Made of Steel





**ECOLOCKERS**

Add: ROOM 301-2, HANG SENG WANCHAI BUILDING,  
3RD FLOOR, NO.200 HENNESSY ROAD, WANCHAI, HK  
T. 00-852 3979 7371  
Email: [info@ecolockers.com](mailto:info@ecolockers.com)  
Web: [www.ecolockers.com](http://www.ecolockers.com)



Please scan the QR codes to find more details